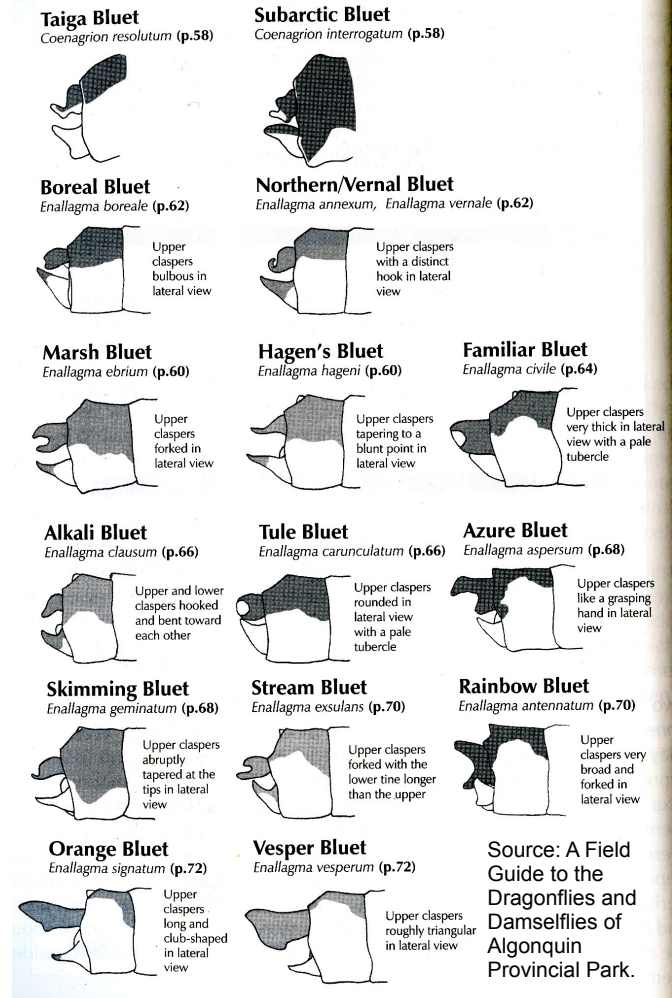


## Enallagma (Bluet) Terminal Appendages

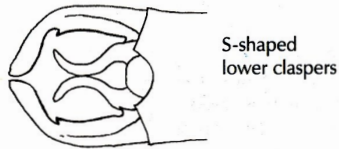


## Enallagma (Bluet) Terminal Appendages

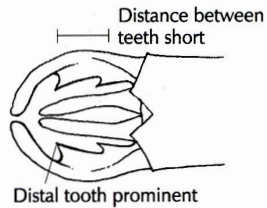


## Lestes (Spreadwing) Terminal Appendages - Males

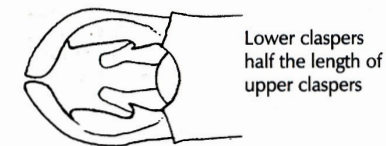
### Lyre-tipped Spreadwing *Lestes unguiculatus* (p.37)



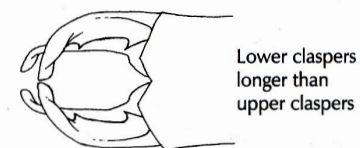
### Northern Spreadwing *Lestes disjunctus* (p.38)



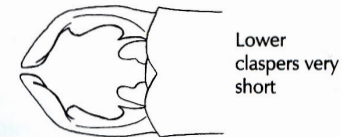
### Spotted Spreadwing *Lestes congener* (p.42)



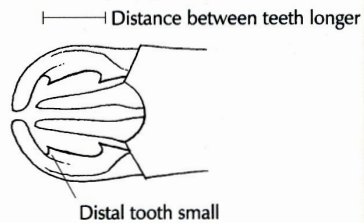
### Elegant Spreadwing *Lestes inaequalis* (p.44)



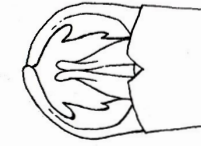
### Amber-winged Spreadwing *Lestes eurinus* (p.46)



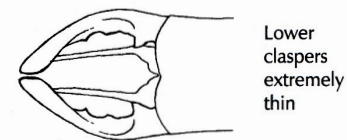
### Sweetflag Spreadwing *Lestes forcipatus* (p.38)



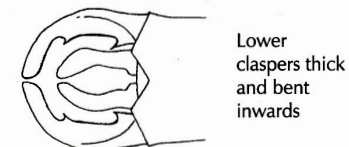
### Slender Spreadwing *Lestes rectangularis* (p.42)



### Swamp Spreadwing *Lestes vigilax* (p.44)



### Emerald Spreadwing *Lestes dryas* (p.46)



Source: A Field Guide to the Dragonflies and Damselflies of Algonquin Provincial Park.

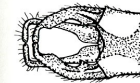
## Lestes (Spreadwing) Terminal Appendages Males and Female

### *Damselflies of the North Woods*

#### Top view of male's claspers



Amber-winged Spreadwing  
*Lestes eurinus*



Elegant Spreadwing  
*L. inaequalis*



Swamp Spreadwing  
*L. vigilax*



Emerald Spreadwing  
*L. dryas*



Slender Spreadwing  
*L. rectangularis*



Lyre-tipped Spreadwing  
*L. unguiculatus*



Sweetflag Spreadwing  
*L. forcipatus*



Northern Spreadwing  
*L. disjunctus*



Spotted Spreadwing  
*L. congener*

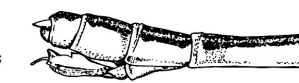
#### Side view of female's abdomen tip



Note rounded margin of basal plate

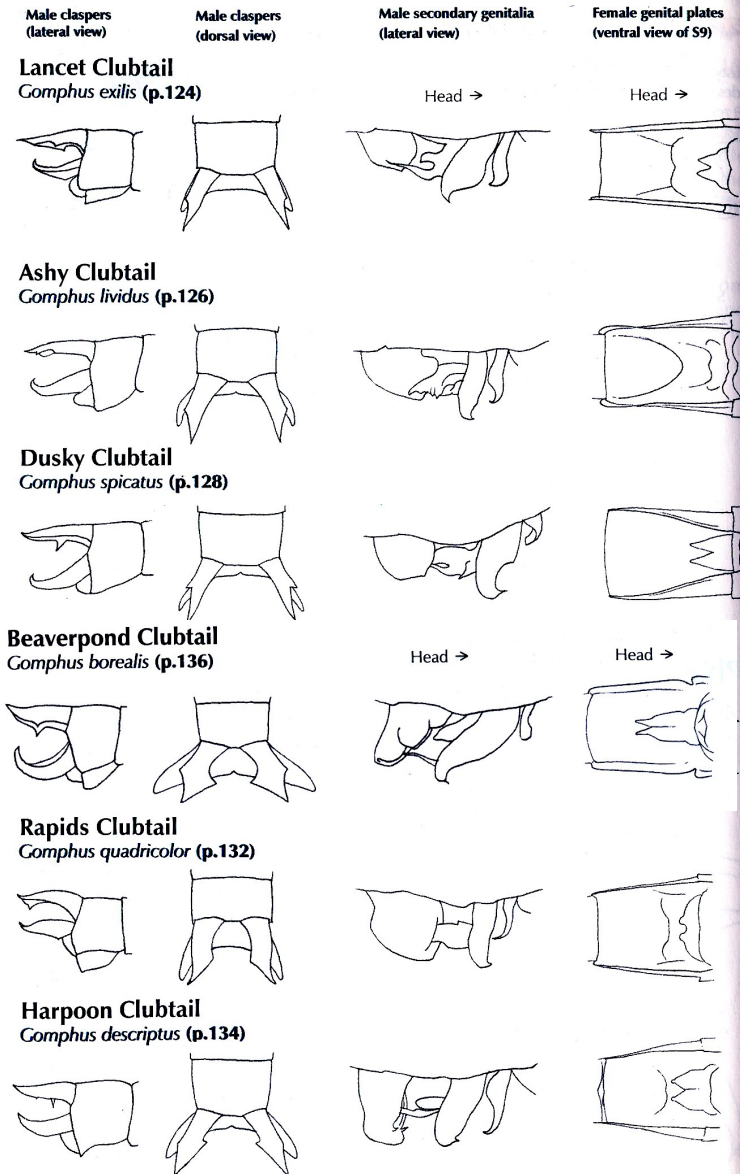


Note angled margin of basal plate



Source: Damselflies of the North Woods by Bob DuBois

## Gomphus (Phanogomphus)



Source: A Field Guide to the Dragonflies and Damselflies of Algonquin Provincial Park.

## Gomphus (Hylogomphus and Gomphurus)

### Mustached Clubtail *Gomphus adelphus* (p.138)



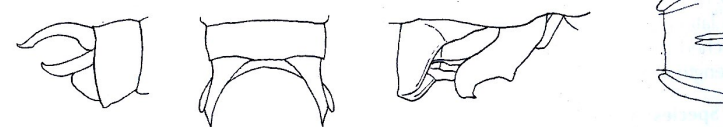
### Green-faced Clubtail *Gomphus viridifrons* (p.140)



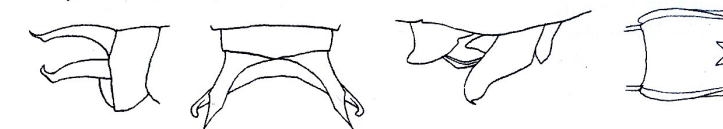
### Midland Clubtail *Gomphus fraternus* (p.142)



### Cobra Clubtail *Gomphus vastus* (p.144)



### Skillet Clubtail *Gomphus ventricosus* (p.146)



Missing *Gomphus abbreviatus*

Source: A Field Guide to the Dragonflies and Damselflies of Algonquin Provincial Park.



## Ophiogomphus (Snaketails) — Male and Female

### Extra-striped Snaketail

*Ophiogomphus anomalus* (p.150)



### Riffle Snaketail

*Ophiogomphus carolus* (p.152)



### Boreal Snaketail

*Ophiogomphus colubrinus* (p.154)



### Maine Snaketail

*Ophiogomphus mainensis* (p.156)



### Rusty Snaketail

*Ophiogomphus rupinsulensis* (p.158)



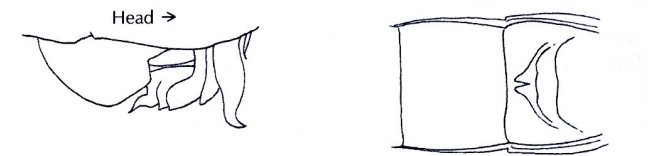
Missing *O. aspersus*

Source: A Field Guide to the Dragonflies and Damselflies of Algonquin Provincial Park.

## Stylurus (Hanging Clubtails) — Male and Female

### Zebra Clubtail

*Stylurus scudderii* (p.160)



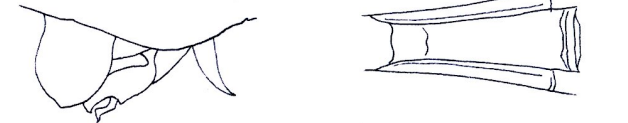
### Arrow Clubtail

*Stylurus spiniceps* (p.162)



### Elusive Clubtail

*Stylurus notatus* (p.164)



### Riverine Clubtail

*Stylurus amnicola* (p.166)



Source: A Field Guide to the Dragonflies and Damselflies of Algonquin Provincial Park.

## Aeshna Thorax patterns

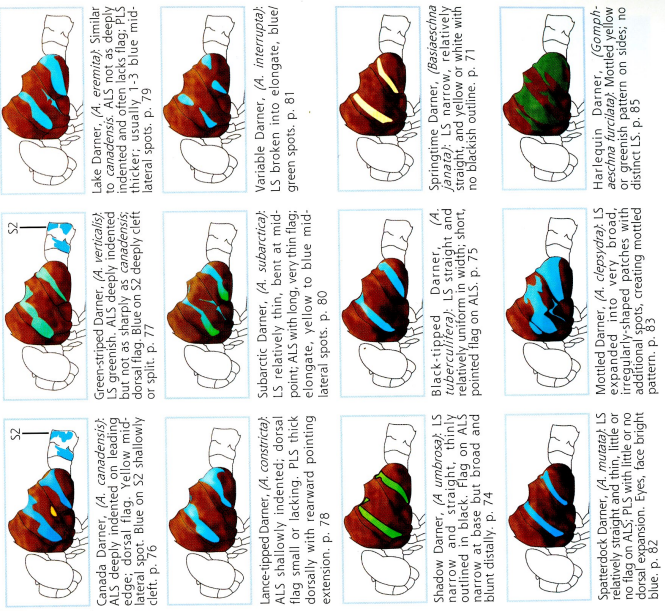


Source: Dragonflies & Damselflies in the Hand by G. Hutchings and D. Halstead

## Aeshna (and similar) Thorax patterns

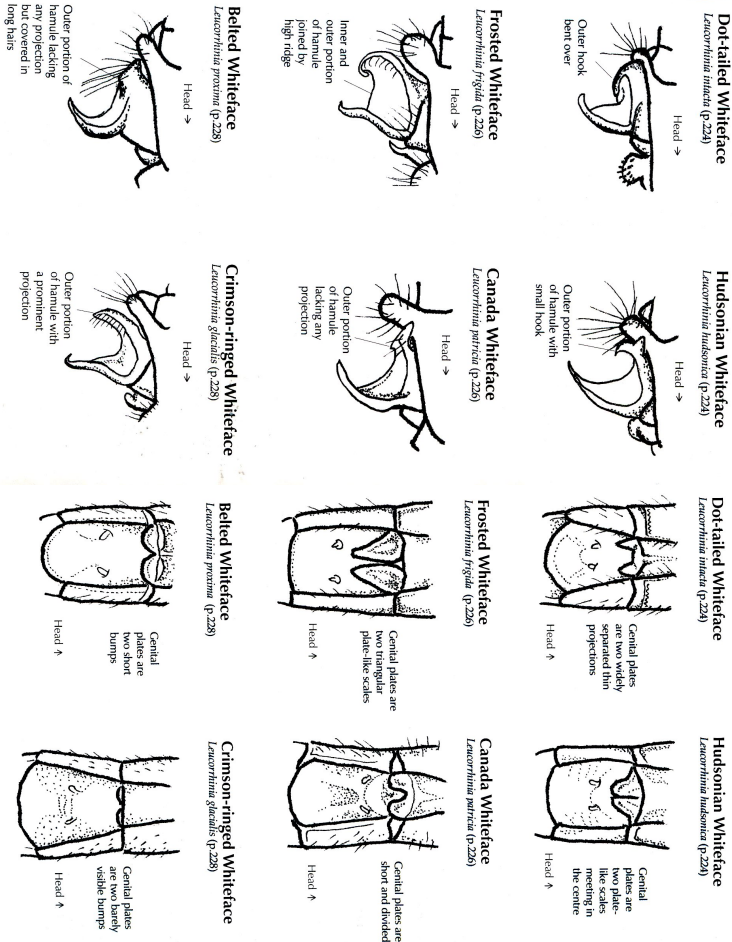
### THORACIC STRIPES OF *AESHNA* AND 2 SIMILAR SPECIES

Mosaic darners (*Aeshna*) can be identified by examining the lateral thoracic patterns. In most species there is a distinct front or anterior lateral stripe (ALS) and a rear or posterior lateral stripe (PLS). LS shape is less variable than their color and therefore is more useful for identification. Characteristics that are important in identification are described below each illustration.



Source: A Field Guide to the Dragonflies and Damselflies of Massachusetts.

## Leucorrhinia (Whiteface) — Males and Females



Source: A Field Guide to the Dragonflies and Damselflies of Algonquin Provincial Park.

**Perpendicular Cental Plates**

**Ocellated Emerald**  
*Somatochlora minor* (p.188)

Long and triangular genital plate  
Lateral view

**Ski-tipped Emerald**  
*Somatochlora elongata* (p.190)

Short, fat, triangular genital plate  
Lateral view

**Williamson's Emerald**  
*Somatochlora williamsoni* (p.190)

Long and triangular genital plate with a long, slender tip  
Lateral view

**Clamp-tipped Emerald**  
*Somatochlora tenaxiosa* (p.192)

Long, triangular genital plate  
Lateral view

**Notched Cental Plates**

**Ringed Emerald**  
*Somatochlora albicincta* (p.198)

Lateral view

**Lake Emerald**  
*Somatochlora cingulata* (p.198)

Lateral view

**Sub-perpendicular Cental Plates**

**Brush-tipped Emerald**  
*Somatochlora walshii* (p.188)

Head →  
Lateral view

**Delicate Emerald**  
*Somatochlora favillina* (p.194)

Head →  
Lateral view

**Incurvate Emerald**  
*Somatochlora incurvata* (p.196)

Head →  
Lateral view

**Kennedy's Emerald**  
*Somatochlora kennedyi* (p.194)

Head →  
Lateral view

**Forcinate Emerald**  
*Somatochlora forcipata* (p.196)

Head →  
Lateral view

**Scop-shaped Cental Plates**

**Ringed Emerald**  
*Somatochlora albicincta* (p.198)

Head →  
Ventral view

**Lake Emerald**  
*Somatochlora cingulata* (p.198)

Head →  
Ventral view

**Brush-tipped Emerald**  
*Somatochlora walshii* (p.188)

Head →  
Ventral view

**Delicate Emerald**  
*Somatochlora favillina* (p.194)

Head →  
Ventral view

**Incurvate Emerald**  
*Somatochlora incurvata* (p.196)

Head →  
Ventral view

**Kennedy's Emerald**  
*Somatochlora kennedyi* (p.194)

Head →  
Ventral view

**Forcinate Emerald**  
*Somatochlora forcipata* (p.196)

Head →  
Ventral view

**Scop-shaped Cental Plates**

**Ringed Emerald**  
*Somatochlora albicincta* (p.198)

Head →  
Ventral view

**Lake Emerald**  
*Somatochlora cingulata* (p.198)

Head →  
Ventral view

**Brush-tipped Emerald**  
*Somatochlora walshii* (p.188)

Head →  
Ventral view

**Ski-shaped Claspers**

**Ocellated Emerald**  
*Somatichthys minor* (p.188)

Lateral view  
Small lateral teeth  
Dorsal view

---

**Brush-tipped Emerald**  
*Somatichthys washliei* (p.189)

Very hairy claspers toward the tips  
Lateral view  
Dorsal view

---

**Pincer-shaped Claspers**

**Delicate Emerald**  
*Somatichthys farlowii* (p.194)

Claspers gradually taper toward the base  
Lateral view  
Dorsal view

---

**Kennedy's Emerald**  
*Somatichthys kennedyi* (p.194)

Claspers are constricted near the base  
Lateral view  
Dorsal view

---

**Fortipate Emerald**  
*Somatichthys fortipate* (p.196)

Early acting upturning tip  
Lateral view  
Dorsal view

---

**Incurvate Emerald**  
*Somatichthys incurvatus* (p.196)

Finely pointed tip curves first up then down  
Lateral view  
Dorsal view

---

**Bent-curled Claspers**

**Ringed Emerald**  
*Somatichthys albocincta* (p.198)

Two ventral teeth  
Lateral view  
Dorsal view

---

**Lake Emerald**  
*Somatichthys argentea* (p.198)

Lateral view  
Single lateral tooth  
Dorsal view

---

**Bent Claspers**

**Clamp-tipped Emerald**  
*Somatichthys tenerosa* (p.192)

Distinctive clamp-shaped claspers  
Lateral view  
Dorsal view

---

**Ski-tipped Emerald**  
*Somatichthys elongata* (p.190)

Two ventral teeth  
Lateral view  
Dorsal view

---

**Williamson's Emerald**  
*Somatichthys williamsoni* (p.190)

Somewhat hairy claspers  
Single lateral tooth  
Lateral view  
Dorsal view